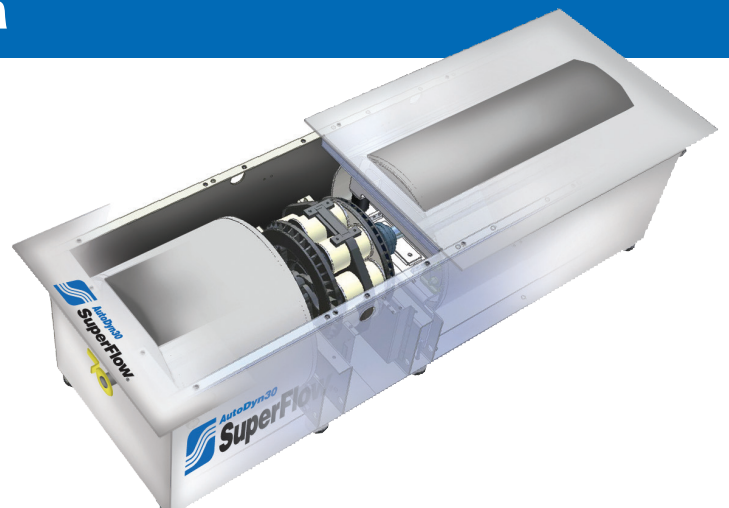




SF-832 CHASSIS DYNAMOMETER

SuperFlow's AutoDyn 30 was designed for versatility with the ability to test ATVs, side by sides, high performance imports, muscle cars and trucks. Test vehicles with over 1,100 HP with controlled load and at speeds up to 225 mph (362 kph). Add a second power absorber for higher-power applications. The AutoDyn 30's included eddy current power absorber is mounted between the rolls this allows you to test narrow-axle drag race vehicles and provides an extremely compact footprint to help conserve valuable shop floor space. SuperFlow provides all this power and efficiency for a very affordable price.

The included WinDyn data acquisition system measures vehicle parameters in real-time via any number of available sensors or directly from the OBDII port, displays them live on screen and automatically graphs them at the end of each test.



Features

- Space saving center mounted eddy current power absorber and load cell provides the benefits of a high capacity loaded dyno in the smallest footprint available
- Incredible versatility: test ATVs, side by sides, high performance imports, muscle cars and light diesels
- Coast down test to report engine power
- Automated tests for simple operation and extreme repeatability – tests include inertia only, controlled acceleration, steady state, step, track simulation, engine power and any user defined drive cycle
- 30 in. diameter, precision knurled rolls provide largest traction surface in its class and greatly reduce dangerous tire deflection and heat seen on smaller diameter rolls – critical for high power applications
- Rugged, impact resistant handheld controller
- Modular sensor box with expansion panel system to easily add sensors over the life of the dyno
- OBDII interface for data logging off the vehicles OBDII port
- Available for in-floor and above-floor installations



Product Specifications

| | |
|---------------------|---|
| Roll Diameter | 30" |
| Peak Power | 2,500+ hp |
| Peak Absorbed Power | 1,100 hp – upgradeable to 2,200 hp |
| Max Speed | 225 mph |
| Track Width | 26" inside – 100" outside |
| System Inertia | 1,200 lbs. |
| Axle Weight | 8,000 lbs. |
| Air Requirements | 50 -100 psi |
| Power Requirements | 110 – 250 VAC, 15 – 8 amp (computer) / 208 – 250 VAC, 40 amp (dyno) |